



TRIGA[®] GO

MODULAR DISPLAYS



Prime LED Light

10' U-Booth shown
with monitor mount

20" counter

20" counter

our high-end, long-term
MODULAR DISPLAY

Prices are subject to change; visit showdowndisplays.com for the most current pricing.
Setup fee: \$20.00(G); no setup fee on orders placed via our website. View current graphic templates, assembly videos and instructions on our website.
SHOWDOWNDISPLAYS.COM

TRIGA® GO MODULAR DISPLAY SYSTEM

The TRIGA® Go modular display system is a lightweight, portable display solution designed for easy setup and customization. It offers a sleek and professional presence for trade shows, events, and brand activations.

- Modular design allows you to expand and modify into various configurations
- Combine with other TRIGA® Go components to craft a highly adaptable and visually striking display (sold separately)
- Innovative fabric tension poles ensure a wrinkle-free finish
- One-piece wraparound graphic provides a polished look
- Available in single- and double-sided options
- Artwork is dye sublimated on recycled polyester knit
- 100% recycled media is made with fibers recycled from plastic bottles
- Compact and lightweight
- Packs flat for easy transport
- Tool-free assembly
- Warranties range between two and three years (see website for details)



20'W U-Booth shown with monitor mount, shelves and Prime LED Light



TRIGA® Go Kit 2

38" counter

38" counter



Graphic simply slides into grooves on the top and bottom rails.



Easily connect horizontal rails to vertical poles.



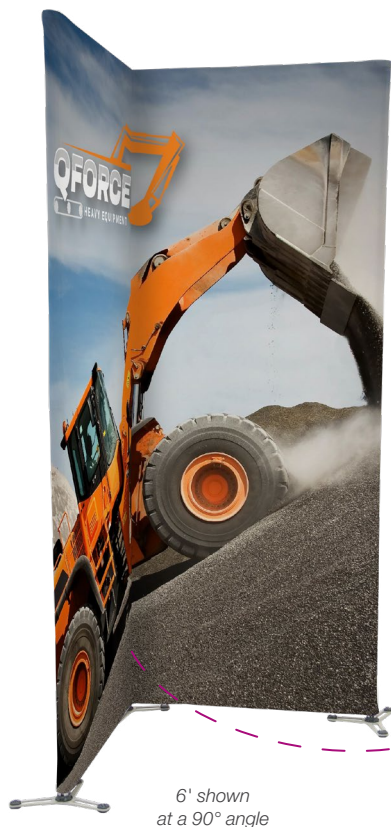
Join the top and bottom poles by turning the connector to lock.



Corner braces provide added stability to your display.

Prices are subject to change; visit showdowndisplays.com for the most current pricing.
Setup fee: \$20.00(G); no setup fee on orders placed via our website. View current graphic templates, assembly videos and instructions on our website.

SHOWDOWNDISPLAYS.COM



6', 10' and 20' walls can be angled 90° at any interior vertical pole, allowing you to create unique shapes with the same graphic across the display.

TRIGA® Go Wall (Single-Sided)

| Item # | Description | 1 | 2-5 | 6-11 | 12-24 |
|-------------------------------------------------------------------|-------------|---------|---------|---------|--------------|
| 255400 | 3'W Kit | 709.00 | 680.50 | 652.00 | 616.50 |
| 255405 | 6'W Kit | 1360.00 | 1306.00 | 1251.00 | 1183.00 |
| 255410 | 10'W Kit | 1767.00 | 1696.00 | 1625.00 | 1537.00 |
| 255415 | 20'W Kit | 3338.00 | 3204.00 | 3071.00 | 2904.00 |
| 3'-10'W Kit Includes: Hardware, Graphic Panel and Soft Carry Case | | | | | USD MSRP (C) |
| 20'W Kit Includes: Hardware, Graphic Panel and 2 Soft Carry Cases | | | | | |

TRIGA® Go Wall (Double-Sided)

| Item # | Description | 1 | 2-5 | 6-11 | 12-24 |
|-------------------------------------------------------------------|-------------|---------|---------|---------|--------------|
| 255401 | 3'W Kit | 791.50 | 759.50 | 728.00 | 688.50 |
| 255406 | 6'W Kit | 1525.00 | 1464.00 | 1403.00 | 1327.00 |
| 255411 | 10'W Kit | 1987.00 | 1907.00 | 1828.00 | 1728.00 |
| 255416 | 20'W Kit | 3778.00 | 3626.00 | 3475.00 | 3286.00 |
| 3'-10'W Kit Includes: Hardware, Graphic Panel and Soft Carry Case | | | | | USD MSRP (C) |
| 20'W Kit Includes: Hardware, Graphic Panel and 2 Soft Carry Cases | | | | | |

| Description | Product Size | Product Wt. (Single / Double) | Media |
|-------------|-------------------------------|-------------------------------|-------------------------|
| 3'W | 43"W x 96.25"H x 12.875"D | 15.8 lbs. / 17.2 lbs. | recycled polyester knit |
| 6'W | 80.5"W x 96.25"H x 12.875"D | 27.8 lbs. / 30.6 lbs. | recycled polyester knit |
| 10'W | 118.5"W x 96.25"H x 12.875"D | 33.2 lbs. / 37.4 lbs. | recycled polyester knit |
| 20'W | 230.25"W x 96.25"H x 12.875"D | 67.9 lbs. / 76.3 lbs. | recycled polyester knit |

Production Lead Time: 4 days from final proof approval



Single-sided graphic wraps partially around the frame for a seamless front view.



Double-sided graphic has a partial overlap on the backside.

Prices are subject to change; visit showdowndisplays.com for the most current pricing.
Setup fee: \$20.00(G); no setup fee on orders placed via our website. View current graphic templates, assembly videos and instructions on our website.

SHOWDOWNDISPLAYS.COM

round out your layout WITH U-BOOTHS



TRIGA® Go U-Booth

| Item # | Description | 1 | 2-5 | 6-11 | 12-24 |
|-------------------------------------------------------------------|-------------|---------|---------|---------|--------------|
| 255430 | 10'W Kit | 2650.00 | 2544.00 | 2438.00 | 2306.00 |
| 255433 | 20'W Kit | 4100.00 | 3936.00 | 3772.00 | 3567.00 |
| 10'W Kit Includes: Hardware, Graphic Panel and 2 Soft Carry Cases | | | | | USD MSRP (C) |
| 20'W Kit Includes: Hardware, Graphic Panel and 3 Soft Carry Cases | | | | | |

| Description | Product Size | Product Wt. | Media |
|-------------|-----------------------------|-------------|-------------------------|
| 10'W kit | 119.75"W x 96.25"H x 42.5"D | 50.3 lbs. | recycled polyester knit |
| 20'W kit | 231.5"W x 96.25"H x 42.5"D | 93 lbs. | recycled polyester knit |

Production Lead Time: 4 days from final proof approval



Prices are subject to change; visit showdowndisplays.com for the most current pricing.
Setup fee: \$20.00(G); no setup fee on orders placed via our website. View current graphic templates, assembly videos and instructions on our website.

SHOWDOWNDISPLAYS.COM

enhance your space WITH MERCHANDISING



TRIGA® Go Counter

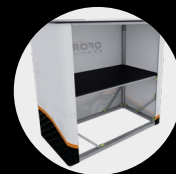
| Item # | Description | 1 | 2-5 | 6-11 | 12-24 |
|--------|-------------|---------|---------|---------|---------|
| 255450 | 20\"W Kit | 1250.00 | 1200.00 | 1150.00 | 1088.00 |
| 255453 | 38\"W Kit | 1534.00 | 1472.00 | 1411.00 | 1334.00 |
| 255456 | 79\"W Kit | 2555.00 | 2453.00 | 2351.00 | 2223.00 |

20\"W & 38\"W Kit Includes: Hardware, Graphic Panel and 2 Soft Carry Cases
79\"W Kit Includes: Hardware, Graphic Panel and 3 Soft Carry Cases

USD MSRP (C)

| Description | Product Size | Product Wt. | Media |
|-------------|-----------------------------|-------------|-------------------------|
| 20\"W kit | 23.5\"W x 40\"H x 23.5\"D | 36.4 lbs. | recycled polyester knit |
| 38\"W kit | 41.125\"W x 40\"H x 23.5\"D | 62.75 lbs. | recycled polyester knit |
| 79\"W kit | 78.625\"W x 40\"H x 23.5\"D | 92 lbs. | recycled polyester knit |

Production Lead Time: 4 days from final proof approval



20\" countertop and internal shelf supports up to 50 lbs.;
38\" and 79\" countertop and internal shelves support up to 100 lbs.

Position TRIGA® Go accessories at any height on the poles.



monitor mount and shelves

waterfall hanger

TRIGA Go® accessories shown on 6\"W TRIGA Go® wall (sold separately)

Each waterfall hanger supports up to 10 lbs.

TRIGA® Go Shelf

| Item # | Description | Product Wt. | 1 | 2-5 | 6-11 | 12-24 |
|--------|-------------|-------------|--------|--------|--------|--------|
| 255471 | Kit | 19 lbs. | 770.00 | 739.00 | 708.50 | 670.00 |

Kit Includes: 2 Poles and 2 Shelves
Each shelf supports up to 20 lbs. Shelf size 36.25\"W x 13.75\"D.

USD MSRP (C)

TRIGA® Go Waterfall Hanger

| Item # | Description | Product Wt. | 1 | 2-5 | 6-11 | 12-24 |
|--------|-------------|-------------|--------|--------|--------|--------|
| 255470 | Kit | 2.8 lbs. | 297.00 | 285.00 | 273.25 | 258.50 |

Kit Includes: Pole and 2 Waterfall Hangers
Each hanger supports up to 10 lbs.

USD MSRP (C)

TRIGA® Go Monitor Mount

| Item # | Description | Product Wt. | 1 | 2-5 | 6-11 | 12-24 |
|--------|-------------|-------------|--------|--------|--------|--------|
| 255472 | Kit | 9.5 lbs. | 727.50 | 698.50 | 669.50 | 633.00 |

Kit Includes: 2 Poles and Monitor Mount
Max monitor size of 50\" or 25 lbs. (monitor not included).

USD MSRP (C)

Hardware Lead Time: Ships same day when ordered before 2 p.m. Central



Each shelf supports up to 20 lbs.



Monitor mount securely attaches to poles; max monitor size of 50\" (monitor not included).

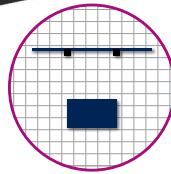
Prices are subject to change; visit showdowndisplays.com for the most current pricing.

Setup fee: \$20.00(G); no setup fee on orders placed via our website. View current graphic templates, assembly videos and instructions on our website.

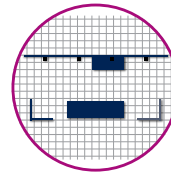
SHOWDOWNDISPLAYS.COM



38" counter



79" counter



6' wall displayed with 90° angle

TRIGA® Go Modular Booth Kit 1

| Item # | Description | 1 | 2-5 | 6-11 | 12-24 |
|--------------------------------------------------------------------------------------------|-------------|---------|---------|--------------|---------|
| 255550 | Kit | 3884.00 | 3743.00 | 3580.00 | 3404.00 |
| Kit Includes: Hardware, 2 Graphic Panels, 2 Prime LED Light Kits and 6 Soft Carry Cases | | | | USD MSRP (C) | |
| Substitutions not allowed. | | | | | |

Production Lead Time: 6 days from final proof approval

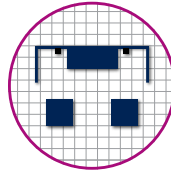
TRIGA® Go Modular Booth Kit 2

| Item # | Description | 1 | 2-5 | 6-11 | 12-24 |
|------------------------------------------------------------------------------------------------------------|-------------|----------|---------|---------|--------------|
| 255551 | Kit | 10275.00 | 9990.00 | 9425.00 | 9075.00 |
| Kit Includes: Hardware, 4 Graphic Panels, Monitor Mount, 4 Prime LED Light Kits and 11 Soft Carry Cases | | | | | USD MSRP (C) |
| Substitutions not allowed. | | | | | |

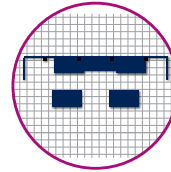
Production Lead Time: 6 days from final proof approval



20" counter



38" counter



TRIGA® Go Modular Booth Kit 3

| Item # | Description | 1 | 2-5 | 6-11 | 12-24 |
|-----------------------------------------------------------------------------------------------------------|-------------|---------|---------|--------------|---------|
| 255552 | Kit | 6485.00 | 6335.00 | 5940.00 | 5755.00 |
| Kit Includes: Hardware, 3 Graphic Panels, Monitor Mount, 2 Prime LED Light Kits and 8 Soft Carry Cases | | | | USD MSRP (C) | |
| Substitutions not allowed. | | | | | |

Production Lead Time: 6 days from final proof approval

TRIGA® Go Modular Booth Kit 4

| Item # | Description | 1 | 2-5 | 6-11 | 12-24 |
|--------------------------------------------------------------------------------------------------------------------------|-------------|----------|---------|---------|--------------|
| 255553 | Kit | 10070.00 | 9850.00 | 9215.00 | 8945.00 |
| Kit Includes: Hardware, 3 Graphic Panels, Monitor Mount, 2 Shelf Kits, 4 Prime LED Light Kits and 11 Soft Carry Cases | | | | | USD MSRP (C) |
| Substitutions not allowed. | | | | | |

Production Lead Time: 6 days from final proof approval

